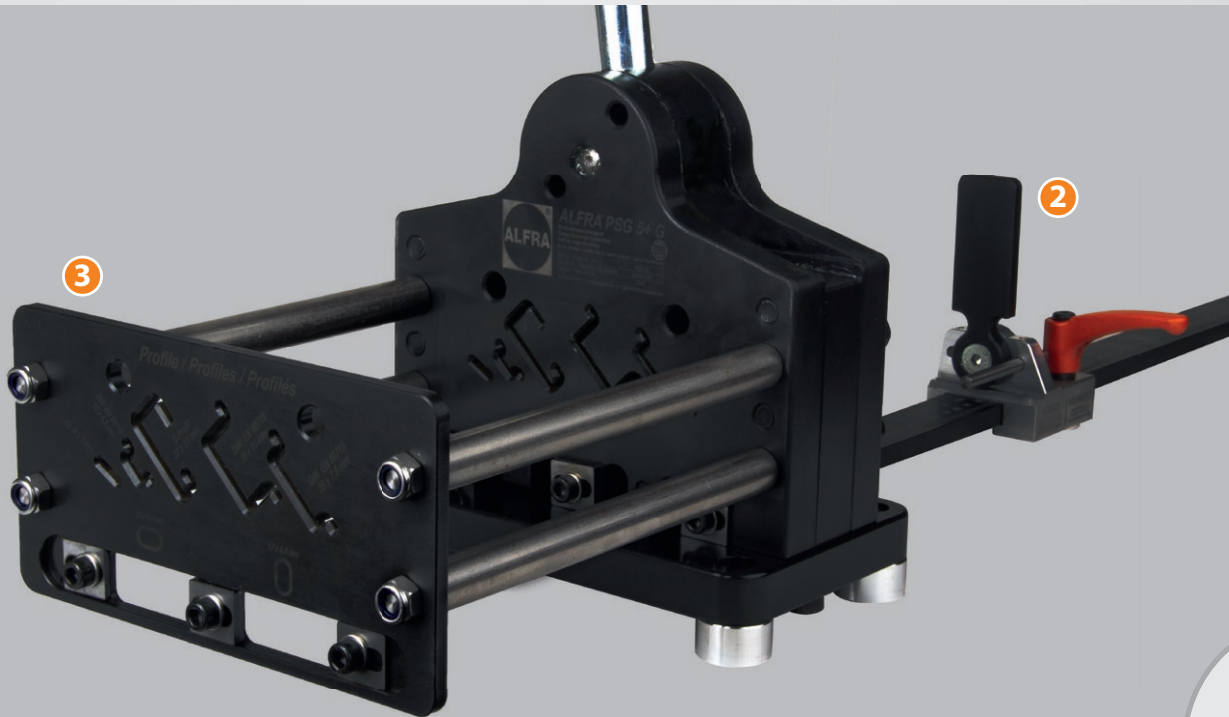


ALFRA PROFILE RAIL CUTTING DEVICE[®] – PSG 5+[®] G-PROFILE



MADE IN GERMANY

- 1 Handle: reinforced – soft touch**
- 2 Limit stop with mm/inch laser-engraved**
- 3 Profile throughput is optimised for lowest-possible cutting play**

For mounting rails, for hand lever operation for **cutting to length and hole punching longitudinally and transversely** on the depicted mounting rails.

- With reinforced cam located directly above the shear plate
- Lower force application due to improved force transmission
- Burr-free cutting to length without waste
- Maintenance-free
- Anodised, laser-engraved length limit stop 1,000 mm with guiding device for precise angled cutting to length, with millimetre and inch scaling
- Shear plate can be re-ground, puncher replaceable
- Custom-made products are also possible (please send us a sample rail of about 1,000 mm length)

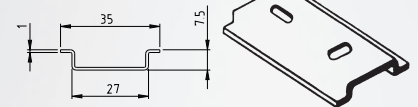
Scope of delivery

with transverse and longitudinal hole puncher 12 x 6.4 mm,
1000 mm length limit stop and guidance fixture
incl. G-profile as per EN 60715

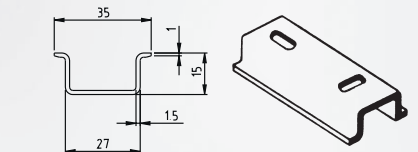
Prod.-No.

03001G

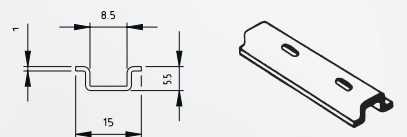
Mounting rail
35mm/7.5
as per EN 60715



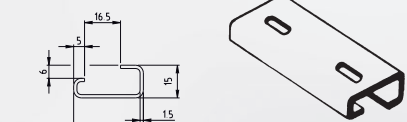
Mounting rail
35 mm/15
as per EN 60715



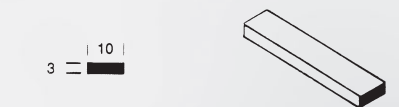
Mounting rail
15 mm/5.5
as per EN 60715



G-profile
as per EN 60715



Copper ground rails
10 mm x 3 mm



Spare parts for universal cutting and punching device

	Prod.-No.
Spare puncher + die 12 x 6.4 mm f. longitudinal hole	03005
Spare puncher + die 12 x 6.4 mm f. transverse hole	03006
Spare puncher + die 5.5 mm f. round hole	03007
Spare puncher + 6.0 mm f. round hole	03008
Special versions for mounting rails or flat rails, also in stainless steel or aluminium or plastic on request	03011